

Qlab Setup Guide

This is a quick and simple guide to setting up your USB GO BOX In Qlab. The USB GO BOX can be used with various pieces of software on both PC and Mac but we are often asked to explain the set up proses in Qlab. That Little Box is not in any was associated with Figure 53.

MSC Mode

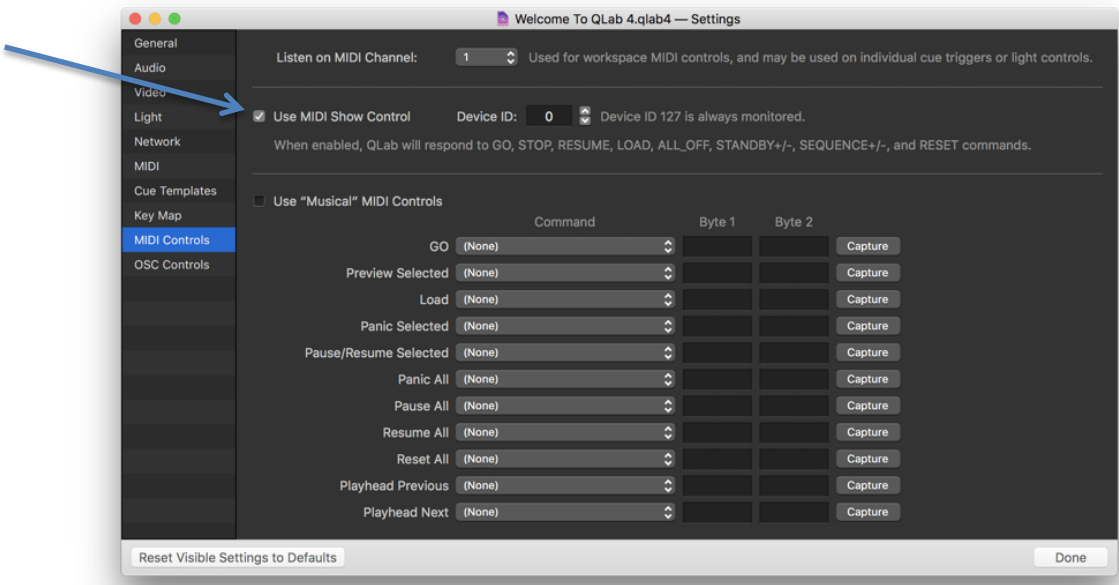
MSC Mode is the default setting on your USB GO BOX. In MSC mode the USB GO BOX sends SysEx MIDI commands. When using this mode in Qlab you get the commands listed in the table to the right.

Button	MSC command
Green	Go
Red	Stop
Black Left	Last cue
Black Right	Next cue
Yellow	Load
Blue	Pause

MSC commands are automatically recognized by Qlab so no button assignment is necessary.

To use MSC mode in Qlab go to Preferences/Midi Controls and check the box that's says "Use MSC".

Note that when in MSC mode Qlab will open Groups and scroll though each child when using the Next and Previous buttons, this is how Qlab chooses to act on MSC Next and Previous commands.



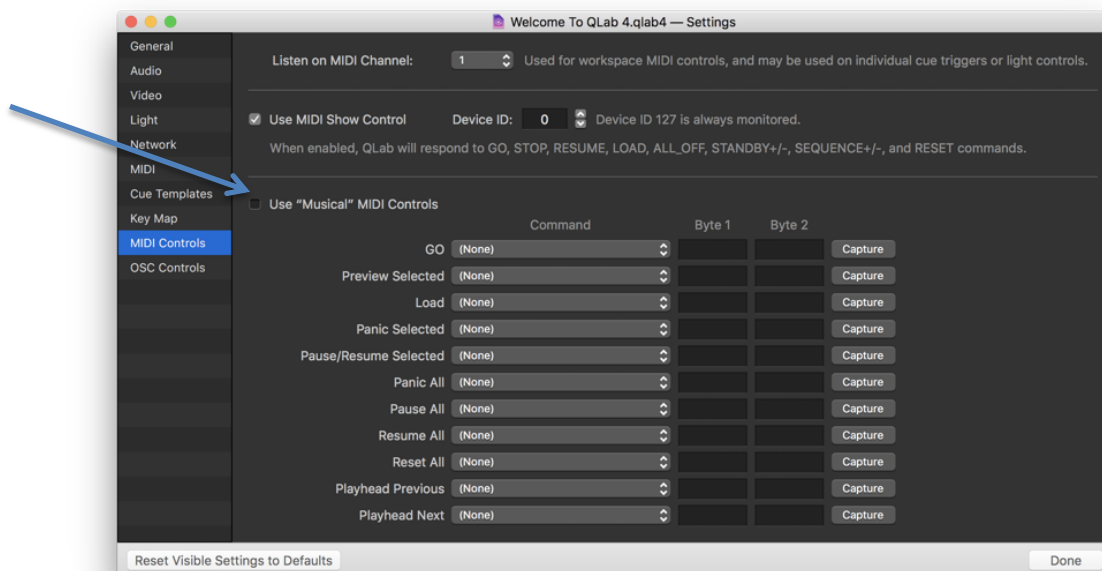
Program Change Mode

The USB GO BOX also has 2 Program Change (PC) modes. These can be reached by unplugging your USB GO BOX, holding the Green button, and plugging your box back in. In PC mode 1 and 2 the USB GO BOX sends Program Change commands on either MIDI channel 1 or 2 as listed in the table shown below.

Button	PC1	PC2
Green	0 – channel 1	0 – channel 2
Red	1 – channel 1	1 – channel 2
Black Left	2 – channel 1	2 – channel 2
Black Right	3 – channel 1	3 – channel 2
Yellow	4 – channel 1	4 – channel 2
Blue	5 – channel 1	5 – channel 2

Program Change commands need to be assigned to functions in Qlab before they will work. This requires a bit more set up but makes Program Change Mode much more flexible than MSC mode.

To use Program Change mode in Qlab go to Preferences/Midi Controls and check the box that's says "Use Musical MIDI". Then using the menu on the page bellow the check box, select the function you would like to assign and hit the capture button. Once the button is highlighted, press the button on the USB GO BOX that you would like to assign control to.



When using PC mode you can also assign buttons to individual cues. To do this select the relevant cue and bring up the "basics" tab. On the Right of the screen there is a check box labeled "MIDI Trigger", tick this and then click the Capture button just below the checkbox, finally press the button that you wish to assign to that cue.

Hopefully that's all nice and clear. Any questions then please do get in touch.